



Heritage News

Discover Crowsnest Heritage

ISSUE #8

DECEMBER 15, 2010

WELCOME

CONTENTS

Welcome
What's On's
Mark Your Calendars
Featured Article:

**G. Malcolmson,
Pioneer Doctor**
by
Ian McKenzie

100 Years Ago
Volunteers Needed
Subscribe/
Unsubscribe

Welcome to the final issue of the Crowsnest Heritage Newsletter for 2010. To date we have just over 150 subscribers and intend to continue publishing in 2011. The Newsletter was a pioneer project of the Crowsnest Heritage Initiative to see if there was interest in an online periodical listing heritage events in the Crowsnest and publishing local history stories. Since it has survived eight issues, we think it's time for it be properly named, so we're having a NAMING COMPETITION.

FIRST PRIZE: A one year subscription to the online heritage newsletter. (ha ha!)
SEND YOUR NAME SUGGESTIONS: to cnheritage@shaw.ca by January 31st, 2011.

Here are some examples to get you going. You can vote for one of these or send an original name in (preferred).

PASSTIMES GOOD OLDE DAYS

CROWSNEST JOURNAL

CROW TATTLER

HISTORY CALLS

CROWSNEST HERITAGE
NEWSLETTER

**C R O W S N E S T
C H R O N I C L E S**

We'll announce the new name in the February 15th 2011 issue. Include your name, a brief paragraph on why you think Crowsnest Heritage is important and a photograph (all optional) and, if we use your suggestion, we'll publish those too.

Season's Greetings!

WHAT'S ON

Editor: Claire Allum
cnheritage@shaw.ca
A Crowsnest Heritage Initiative Project.

If interested in submitting an article, news piece, or update, please send it to cnheritage@shaw.ca.

OPEN ALL YEAR IN THE CROWSNEST!

CROWSNEST MUSEUM, ARCHIVES AND GIFT SHOP

7701-18th Ave. Coleman 403-563-5434



Open Monday - Friday 8:00 am - Noon 1:00 pm - 5:00 pm. ***The Museum is now on Facebook-check it out***

Open year round. Along with its displays and archives, it hosts a Gift Shop and runs tours and educational programs. **Contact:** cnmuseum@shaw.ca. Adults \$10, Seniors (65+) \$8, Youth (6-16) \$6, Under 6 free, Families \$24.

FRANK SLIDE INTERPRETIVE CENTRE

Hwy 3 Crowsnest Pass 403-562-7388



Open year round 10:00 am - 5:00 pm. Closed Christmas Eve, Christmas Day, New Years Day and Easter Sunday.

The Frank Slide Interpretive Centre is open year round. Along with its displays, it hosts a daily audio-visual presentation of "In the Mountain's Shadow," and shows the docudrama "On the Edge of Destruction--The Frank Slide Story." It has a Gift Shop with great Christmas gift ideas and hosts tour groups and runs educational programs. **Contact:** info@frankslide.com. Adults \$9, Seniors (65+) \$8, Youth (7-17) \$5, Under 7 free, Families \$22.

LEITCH COLLIERIES

Hwy 3, East end of Crowsnest Pass

Open year round. Self-guided tour.

The site has interpretive panels, lights for nighttime viewing and washroom facilities. The walking tour takes you past the ruins of the old powerhouse, the mine manager's residence, the coke ovens, the washery and the tippel.

HILLCREST MINE DISASTER AND MEMORIAL CEMETERY

West end of Hillcrest, follow Heritage Driving Route Signs into Hillcrest

Open year round. Self-guided tour.

The site has interpretive panels. A walking tour takes you past the graves of the miners killed in the Hillcrest Mine Disaster of 1914, Canada's worst coal mining disaster. There is a memorial to all miners killed in coal mining accidents in Canada.

OPEN NEARBY

HEAD-SMASHED-IN BUFFALO JUMP (UNESCO World Heritage Site)

Hwy 785 403-553-2731

Open year round 10:00 am - 5:00 pm. Closed Christmas Eve, Christmas Day, New Years Day and Easter Sunday.

Along with its displays it has audio-visual presentations, a cafeteria featuring bison burgers, a gift shop filled with First Nations handicrafts, and hosts tour groups and runs educational programs. **Contact: info@head-smashed-in.com. Adults \$9, Seniors (65+) \$8, Youth (7-17) \$5, Under 7 free, Families \$22.**

KOOTENAI BROWN PIONEER VILLAGE

1037 Bev McLachlin Dr., Pincher Creek. 403-627-3684

Open Mondays, Tuesdays, Wednesdays and Fridays. Adults \$10, Seniors (65+) \$7, Youth (7-17) \$7, Under 7 free.

Santa Claus Visit: Friday, December 17th, 2:00 pm to 4:00 pm.

During his visit from the North Pole, complimentary cookies, hot chocolate and hot apple cider will be available. There will also be special treats for good little boys and girls.

Skating Rink and Boxing Day Family Skating Event.

An outdoor skating rink has been made in the Museum grounds. **Admission is \$3** for the whole day during Museum hours. On Boxing Day (**December 26th**) there will be a **Skating Boxing Day Party from 3:00 pm to 7:00 pm. Admission \$2.** Bring your own hotdogs to cook over the provided fires. Hot chocolate will be provided with admission.

REMINGTON CARRIAGE MUSEUM

Cardston, Alberta 403-653-5139

Open year round 10:00 am - 5:00 pm. Closed Christmas Eve, Christmas Day, New Years Day and Easter Sunday.

It recently won "The Best Indoor Tourist Attraction in Canada" award. It has the largest collection of horse-drawn vehicles in North America with over 240 carriages, wagons and sleighs. The 63,000 square foot facility features video displays, a fire hall, a carriage factory, a restoration shop, a working stable, carriage rides, carriage rentals, a restaurant and a gift shop. There are free guided tours. Group tours and educational tours are offered. **Contact: info@remingtoncarriagemuseum.com. Adults \$9, Seniors (65+) \$8, Youth (7-17) \$5, Under 7 free, Families \$22.**

EVENTS

GALT MUSEUM AND ARCHIVES

502 1st. S., Lethbridge 1-866-320-3898

Open Monday to Saturday 10:00 am to 4:30 pm, Sundays and Holidays 1:00 pm to 4:30 pm. Adults \$5, Seniors (65+) \$4, Youth (7-17) \$3, Under 7 free, Families \$12.

Museum Community Day: Saturday, December 18th, 10:00 am to 2:00 pm.

There will be free admission along with special programs and activities to celebrate the opening of the special exhibit "Fakes and Forgeries."

Fakes and Forgeries, Yesterday and Today: Saturday, December 18 to Sunday, April 10th 2011.

Visitors learn how to tell authentic pieces from sly forgeries and discover the fascinating lengths forgers will go to to hoodwink the unwary! Spot the differences between fakes and real artifacts that run the gamut from Natural History and World Cultures, to modern designer brands in this interactive exhibition. Also includes educational information about pirated computer software and sections on counterfeit currency.

Children's Program: Top 10 of 2010: 1:00 pm to 4:00 pm, parents are required to attend with children.

Galt had so many fantastic Saturdays at 1:00 and summer programs during 2010, they are reprising the top ten during Winter Break. Monday, December 20th.

Lizards and things: Learn about the links between lizards and dinosaurs as you meet some reptile friends from Alberta Reptile Parties.

Tuesday, December 21st.

Treasures of the National Film Board: Watch National Film Board films including: The Cat Came Back, The Black Fly, The Hockey Sweater, and more!

Wednesday, December 22nd.

Jr. Palaeontologist: Become a Jr Palaeontologist in this program by Devil's Coulee Heritage Museum as you search for fossils, identify them, and grid a site.

Thursday, December 23rd.

Photo Paper X-Rays: Experiment with "x-raying" everyday objects on this light sensitive paper. Create x-ray art as you experiment.

Friday, December 24th.

Treasure Boxes: Make your own special box to store your treasures.

Monday, December 27th.

Thank You Cards: Make your own thank you cards using photos from our archives.

Tuesday, December 28th.

Puppet Making: Make your own puppet character from one of three Napi stories and, if you like, participate in a puppet show.

Wednesday, December 29th.

Make your own Memory Game: Learn about treasures and curiosities from around the world as you make your own memory game.

Thursday, December 30th.

Fossil Casting: Make a fossil cast, search for micro fossils, and compare casts to real fossils in this exiting program form Tyrell Museum.

Friday, December 31st.

International New Years Decorations: Learn how other cultures celebrate new years as you make these fun crafts.

GLENBOW MUSEUM

130-9th Ave. SE, Calgary. 403-268-4100

James Henderson: Wiciteowapi Wicas: ends Sunday, January 9th 2011.

James Henderson (1871-1951) was born in Glasgow, Scotland, where he apprenticed as a lithographer and studied at the Glasgow School of Art. He immigrated to Winnipeg in 1909 and moved to Regina one year later to become a commercial artist. Henderson became enthralled by the Qu'Appelle Valley (45 miles east of Regina) and the First Nations people who lived there. By 1915 he was living in the Valley and had established himself as a painter of portraits and the landscape that surrounded him. He was the first Saskatchewan artist to make a living from his work.



James Henderson, *Portrait of Weasel Calf* (Blackfoot Chief. Last surviving chief who signed the Treaty of Peace in 1877), 1924, University of Saskatchewan Art Collection

GLENBOW MUSEUM

Open Monday to Saturday 9:00 am to 5:00 pm, Sundays 12:00 pm to 5:00 pm. Adults \$14, Seniors (65+) \$10, Students (with ID) and Youth (7-17) \$9, Under 7 free, Families \$32.

Open year round, the Glenbow has ongoing historical exhibits in its main galleries.

Historical Art from the Glenbow Collection.

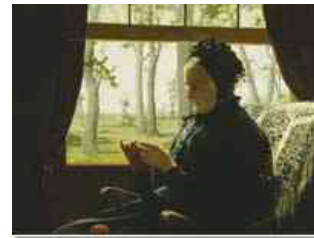
Ranging from the 18th century to the early 20th century, the art in this exhibit is organized into broad thematic areas: portraits, landscape, wildlife, First Nations and the fur trade.

Mavericks: An Incurable History of Alberta.

Mavericks presents the story of Southern Alberta in a dynamic and compelling way. Unlike a traditional history exhibition that lists dates, names, and events, Glenbow will provide visitors with an experience of what it means to be Albertan. The dynamic gallery tells our province's history through the stories of 48 mavericks – adventurous, hard-working and spirited men and women.

Niisitapiisinni: Our Way of Life, The Blackfoot Gallery.

Journey through the Blackfoot Gallery: *Niisitapiisinni: Our Way of Life*. Uncover the traditions, values, and history of these people, who have lived for thousands of years in the northwestern plains of Alberta and Montana. The Blackfoot share their story through interactive displays and artifacts and through a circular narrative path that guides visitors through Nitsitapii history.



George Agnew Reid, *At the Window*, 1888. Collection of Glenbow Museum.

MARK YOUR CALENDARS

[BACK TO CONTENTS](#)

PRAIRIES'N PEAKS QUILT FESTIVAL

A juried and invitational show sponsored by the Crowsnest Museum and the Kootenai Brown Museum, including a showing of historic textiles. For more information go to <http://prairienpeaks.blogspot.com> : **Friday, June 10th to Sunday, June 19th 2011. Visit www.prairienpeaks.com**

FEATURE ARTICLE

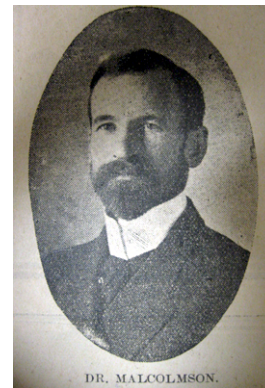
[BACK TO CONTENTS](#)

George Malcolmson, Pioneer Doctor

by Ian McKenzie, Frank, Crowsnest Pass, AB.

Born in Ontario in 1867 (some sources say 1868), George Malcolmson graduated from Toronto University in 1897, and then finished his medical training in Lethbridge. He met his future wife Anne, a trained nurse, in Lethbridge during a house-call where he treated her sister. By 1898 he was practicing medicine in Pincher Creek and was the local Medical Officer for the CPR during the construction of the Crow's Nest Line. When Dr. Malcolmson moved to the new settlement of Frank in 1901 he became the first doctor in the Crowsnest Pass, and in 1902 he opened one of Alberta's earliest rural hospitals. In 1906 (some sources say 1907) Malcolmson purchased what was possibly Alberta's first x-ray machine (Edmonton also acquired one in 1906) for \$450.

Dr. Malcolmson was an intimate witness to some of the most famous events within the Crowsnest Pass. He treated the injured victims of the Frank Slide of 1903, all of whom recovered. In 1907 he attended the bloody murder scene of prostitute Monty Lewis, who was stabbed and bludgeoned in her bedroom. He examined the body of Cst. George Willmet, murdered in 1909 by a shotgun blast to the face - the first policeman killed in the province of Alberta. He examined the bodies after the Bellevue Mine explosion of 1910, and gave evidence at the inquiry the following year. Dr. Malcolmson was assisted by various staff, including Marion Moodie, Alberta's first nursing school graduate.



1906 Newspaper Clipping.

Mrs. Thomas Wright was at Dr. Malcolmson's hospital last evening for treatment of a bullet wound received in a peculiar accident. It is said the husband felt the necessity of disciplining one of the children but the family dog objected and pitched into the head of the family. Wright is said to have grabbed up a small revolver to 'ake a shot at the dog but his aim was poor and the bullet struck Mrs. Wright in the foot. The wound though painful is not serious.

Frank Paper, March 18, 1909.

Dr. Malcolmson was a founding member of the Southern Alberta Medical Association in 1909, the same year that he was elected a Frank councillor. In 1910 he traveled to Europe to broaden his knowledge of x-rays, and in 1911 he moved his family to Edmonton where he headed the radiology department at the Royal Alexandra Hospital and became one of Canada's first full-time radiologist, and helped establish the radiology department at the Edmonton General Hospital. He was an executive committee member of the Alberta Medical Association in 1911, and president of the College of Physicians and Surgeons for 1914 - 1915. Dr. Malcolmson was the first Alberta doctor to use radium in the treatment of cancer patients, and in 1941 he was appointed the Director of Cancer Clinics for Alberta. Dr. Malcolmson died in 1944, an acknowledged Canadian pioneer in radiology.

Perhaps the most poignant moment of Dr. Malcolmson's career is told by Dr. George Stanley in his *Medical Pioneering in Alberta* (Alberta History Review, 1953). In 1903, Dr. Malcolmson treated his own two-year-old daughter for laryngeal diphtheria including performing a tracheotomy, but was unable to save her. According to Dr. Stanley, Malcolmson had to dig his daughter's grave himself because the miners were on strike. Beatrice Malcolmson (1902-1903) is buried in Blairmore's Old Union Cemetery.

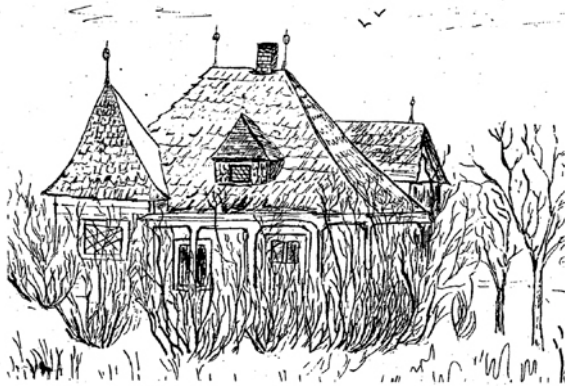
The Frank Hospital

The modest seven- or eight-bed hospital was constructed in 1902, immediately behind the Malcolmson residence. Unlike most other yards in the Pass, the native trees (young alders or poplars) were not cleared from the site, making it almost impossible to pick out these buildings on town photographs. Both buildings were located on Block 30 Lots 19-20 (presently 14913 - 21 Avenue), separated from the Gebo mansion (present 14937 - 21st Avenue) by a tennis court (1906 Chas Goad insurance map). A two-storey stable/barn was behind the hospital, where the Malcolmsons kept their milk cow and two horses (1906 census data) and carriage.

Some historians suggest that the Frank hospital was inside a wing of the Malcolmson residence, but this was clearly not the case. It is possible that patients were originally accommodated within the house - there was an incongruous wing off the back - and that the hospital building was constructed shortly afterwards. It could equally be that the Malcolmson's lived in the hospital while their house was being built. However it could just be a misconception stemming from the Frank Slide, when the hospital's overflow patients were accommodated in the house.

The hospital itself was expanded sometime between 1906 and 1910, changing its C-shape to a T-shape with a new section built down its centre (1910 update, Chas Goad insurance map). Despite the move to Edmonton in 1911, George Malcolmson retained ownership of the property long after the house was gone, allowing it to revert to the village of Frank for taxes in 1932 (Certificate of Title B.T.11, 1904; notation on back).

The fate of the hospital building is not known, but the Malcolmson residence was moved in pieces by rail to a farm near Alliance, Alberta in 1916 or 1917. In 1992 the Frank Slide Interpretive Centre received a letter from an English tourist which enclosed photos of the derelict house, which Alliance locals referred to as the 'old Frank hospital'. We are fortunate to have these photos, as the old house was torn down and burned in 2004. It's a shame; I would have liked to have seen the famous doctor's house myself.

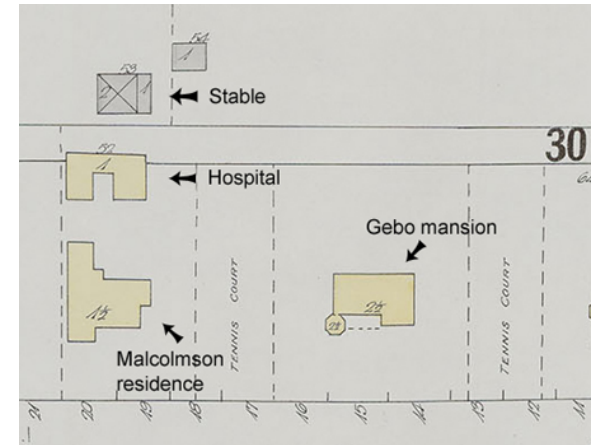


Sketch of the John J. Thomas house in recent years, done by Ruth Peacock

From "In the Bend of the Battle, History of Alliance and District," 1976.



Newspaper Clipping 1906: Gebo Mansion with Hospital on the Left.



Portion of 1906 Insurance Map of Frank (dark text and arrows added).



Alliance AB circa 1992, Front and Back.

- December 21st: The Pretoria Pit Disaster killed 360 British coal miners in an explosion at the Culton Colliery Company near Bolton in northwest England.
- On January 4th the inquest into the causes of the Bellevue Mine Disaster of December 9th 1910, resumed.
- On January 11th Alberta recorded its coldest temperature, -61.1 C, at Fort Vermilion.
- In January, Crowsnest Pass suffered from violent snowstorms and frigid temperatures that stopped traffic and trains. A temperature of -26.9F (-32.7 C) at the newly constructed weather station in Blairmore. Residents claimed colder temperatures were reached during the night.

VOLUNTEERS NEEDED

[BACK TO CONTENTS](#)

SUPPORT LOCAL HISTORY BY VOLUNTEERING SOME TIME AT THE CROWSNEST MUSEUM!

Some volunteer opportunities available include:

- Taking admissions and running the Gift Shop
- Acting as a guide for walking tours and educational programs
- Working with the collection
- Housekeeping and maintenance

Contact Stephanie at the Crowsnest Museum to discuss volunteering some time: 403-563-5434.

SUBSCRIBE/UNSUBSCRIBE

[BACK TO CONTENTS](#)

If you wish to receive copies of this monthly e-newsletter or wish to comment upon something you have read in this publication, please contact cnheritage@shaw.ca. If you wish to stop receiving copies of this e-newsletter, please send a message to cnheritage@shaw.ca asking to unsubscribe. Copies of this newsletter and archived issues can be viewed at <http://www.crowsnestheritage.ca/Newsletters/>