



# Heritage News

Discover Crowsnest Heritage

## CONTENTS

• What's On

• **Feature Article**

The Mantrip Project

by: Eva Welsh

- Poetry Corner - Ray Bagley
- Signs of Crowsnest Pass
- 100 Years Ago
- Historical Venues in Southern Alberta
- Stocking Stuffers at the Museum
- Archives
- Subscribe/Unsubscribe

## Co-Editors

Stephanie Laine-Hamilton,  
Isabel Russell and Ken Allred

A Crowsnest Heritage  
Initiative Project

If interested in submitting an  
article, news piece, or update,  
please send it to  
[cnhnewsletter.ca](mailto:cnhnewsletter.ca)

Issue #37


December 2014

## WHAT'S ON

### *Museum Sponsored Programs:*

#### ***Connecting Communities - Topic 2 - Family Heritage***

All of the people who have come to the Crowsnest Pass - no matter when they arrived - brought with them the traditions, clothes and customs of home. With this program we will explore some of those customs, traditions, and stories.



**Seniors and Heritage  
in the Pass**


**Nostalgia Programs for Seniors**

Sharing Stories, Identifying Photos and  
Enjoying Food together.

**Topic 2: Focus on Hillcrest and Lime City**  
**December 3** 1:00-3:00 p.m. Hillcrest Miners Club 22733 - 7th Ave  
**December 10** 1:30-3:00 p.m. at Crowsnest Hospital

**Topic 3: Focus on Family Heritage**  
**January 7** 1:00-3:00 p.m. at Coleman Senior's Drop-in Centre  
**January 21** 1:00-3:00 p.m. at York Creek Lodge  
**February 4** 10:00-12:00 at Bellecrest Seniors Centre 2413 - 213 Street  
**February 25** 1:30-3:00 p.m. at Crowsnest Hospital Continuing Care

**Topic 4: Focus on Blairmore**  
**March 4** 1:00-3:00 p.m. at Blairmore Lions Clubhouse  
**March 18** 1:00-3:00 p.m. at Crowsnest Museum  
**April 8** 1:00-3:00 at York Creek Lodge  
**April 22** 1:30-3:00 p.m. at Crowsnest Hospital Continuing Care



For more information or to arrange a ride to or from the program, contact:  
403-563-5434      [cnmuseum@shaw.ca](mailto:cnmuseum@shaw.ca)

**Solve a History Mystery - History Detectives** - Saturday Afternoons at the Museum (Drop-in between 1:00-5:00 - \$2 admission)

**December: Christmas Capers** (every Sat. except Dec. 27) 'Twas the month before Christmas, and all through the Museum . . . Chaos! Solve our Christmas mystery and make an ornament to take home at our Tinkerer's Table.

**January: The Case of the Feature Film** - Lights, Camera, Action! Get into a Hollywood mood and figure out the case of the Feature Film. Investigate a movie filmed in the Pass!

**February: The Case of the Lost Letter** - Today most letters are delivered on the Internet. That wasn't the case when a very important love letter was lost in the post! Investigate the 'art' of letter writing and the postal system.

**March: The Case of the Missing Mountaineer** - What would you do if you were lost in the mountains? Learn about Search and Rescue's daring rescues, and make an emergency kit to keep with you as you explore outside.

**April: The Case of the Spinetingling Spring Mystery** - Spring is in the air - but what makes all the plants start growing? This natural history mystery will touch on some homesteading skills.

**May: The Case of the Phantom Photograph** - Science and history combine! We'll look at how photographs work, and follow a mystery in photos taken by the Gushul studio.

**Crowsnest Pass Public Art Gallery** - Mon-Thur - 10:00-3:00, Fri - 1:00-2:00 & 2:00-4:00, Weekends and Holidays 1:00-4:00

- **Jan. 17 - Feb. 15** - No Particular Topic - Opening Reception - Jan. 17 - 1:00-3:00
- **Feb. 21 - March 22** - Emergence - Opening Reception - **Feb. 21** - 1:00-3:00
- **March 28 - April 26** - Self Portraits: Within the Artist - Opening Reception - **March 28** - 1:00-3:00
- **February 14 - Valentine's Day**
- **February 16 - Family Day - Free admission at all Provincial Historic Sites - Frank Slide Interpretive Centre, Head-Smashed-In Buffalo Jump, Remington Carriage Museum**
- **March 17 - St. Patrick's Day**
- **April 3 - Good Friday**
- **April 5 - Easter Sunday**



## FEATURE ARTICLE

### The Mantrip Project

by Eva Welsh

The Mantrip was a set of converted mine cars that carried miners to their distant workplace underground. As that trip was also a good time for the miners to exchange stories and gossip. I thought “The Mantrip” was an appropriate name for a project aimed at telling the stories of miners and mines in the Crowsnest Pass.

The Mantrip Project evolved from a discussion with a local historian. He envisioned a project to record all the names of miners who had worked in the Crowsnest Pass underground mines.

Because of my family history in mining and my growing interest in learning more about it, I decided to pursue the idea and discussed the possibilities with my husband, Dave. Since we were on the *Crowsnest Pass Ecomuseum Trust Society* (Bellevue Mine) Board of Directors, we presented our proposal to the Board, and it was accepted.

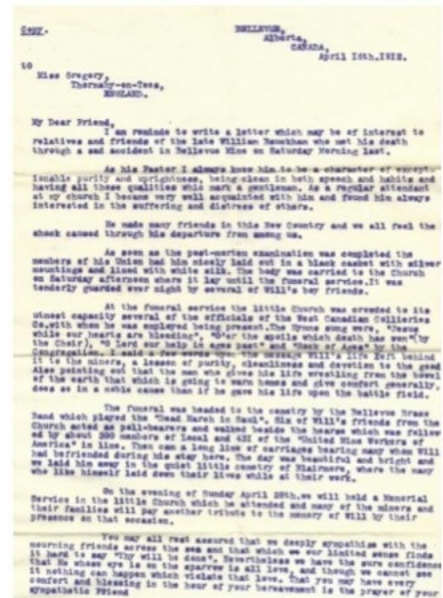
Since 2006 we have received three grants from the *Alberta Historical Resources Foundation* to help fund the project. Our primary goal for the Mantrip Project is to research and collect names of underground miners working in the Crowsnest Pass and Southeastern British Columbia between 1890 and 1982.

Through the collection of miners’ names and supporting personal information, we weave a comprehensive profile of each miner including mining occupation, mining techniques, and individual mine histories thus creating a time capsule of the unique history of underground mining in this area.

Our secondary goal was to create a unified database which would be centralized, comprehensive, and easy to access on an interactive website. This information would be available to the public, educators, and families seeking information about relatives who worked in the mines, as well as for researchers, genealogists, and historians.

The team working on the three grant projects consisted of Dave and myself as volunteer coordinators and researchers of supporting data, Rudy Pagnucco as a paid researcher for the miner database, and Francine Kilgannon as our paid translator of the miners’ oral histories. Karen Buckley and Cameron Welsh from the University of Calgary completed the team as the recommended advisors from a recognized secondary institution.

Over the years, we have compiled a mountain of digital and hard copy materials about miner and related mining information. We have almost 15,000 miners names and supporting data in the miner database which is an ongoing project as there is much more data to obtain and input. We have digitized existing audio tapes of miner’s oral histories going back to the late 1950s as well as adding over 35 new individual oral histories. Learning directly from the miners about their lives in the mines, and in the community, and their experiences with mining practices has been the highlights of the project thus far. These stories have become the basis for much of the Bellevue Un-

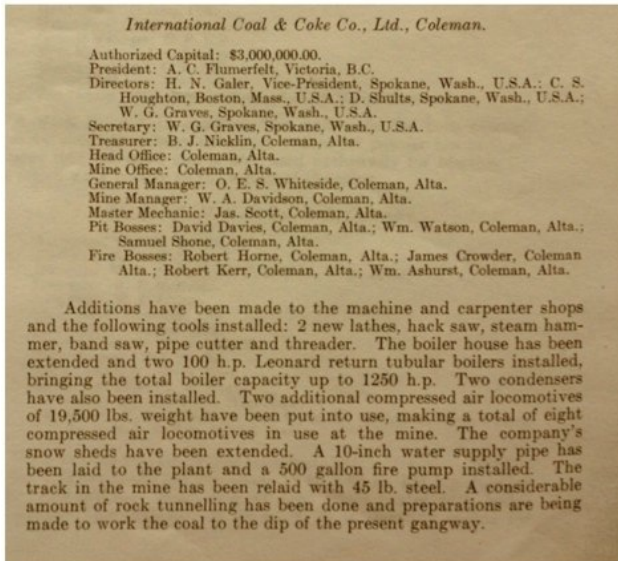


1912 letter to surviving family

derground Mine's interpretive programming. There are however, still many oral histories that require transcribing.

Some of the information researched and collected to date includes:

- wages for specific jobs and contract booklets for the various mines and the miner's unions throughout the years.
- job descriptions with personal stories added to help with the understanding of the job, safety, and dangers.
- history of the individual Crowsnest Pass mines with very detailed information about all aspects of the mines and its development.



### International Coal & Coke C. Annual Report

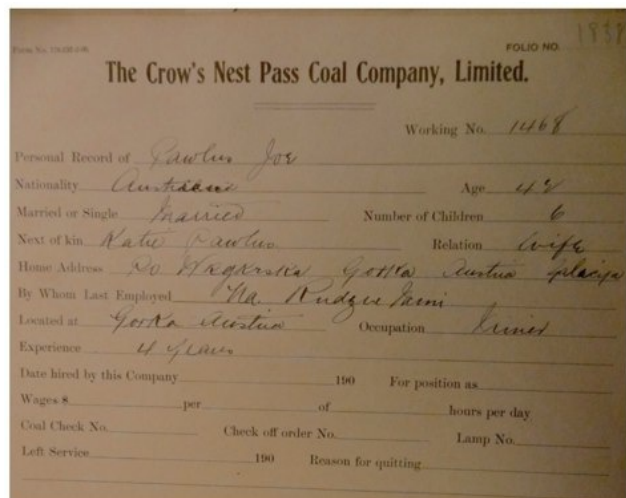
- a large collection of miner and mining photographs from various sources.
- an extensive collection of mine related articles relating to all aspects of mining and mining activities.
- District 18 *United Mine Workers of America* stories and union happenings in the Pass.
- digitized copies of employment records for various mines.

These are just some of the major items we have compiled in our project. The list keeps growing as we encounter new information. The project has become a showcase for the mine's interpretation, programming, and archives.

Our secondary goal - a comprehensive website - will be launched soon to allow public access to this massive collection of mining history.

- detailed accounts of accidents (until the time accident reports were omitted from annual reports) and fatalities including miner's name, age, job, and actual event. (1889-1982)

- certification for various specialty jobs such as manager, fireboss, pitboss, surveyor, electrician, search and rescue. These include miner's name, year and type of certification, and certificate number. (1900-1982)
- number of examinees for each exam and names of examiners. We also have many of the actual exams for different jobs starting in 1903 through to the late fifties.
- annual inspector reports to the government dating back to 1898 recording all major happenings in the mining industry throughout Alberta including total Alberta stats and prosecutions of miners and mine officials.



### Employment Record

## POETRY CORNER

### **A Bright Eyed Filly**

Ray Bagley

A bright eyed filly with a lean grey mare,  
Sway backed pot gutted and old.  
That had weathered years of mosqui-  
toes And pawed snow in the winter  
cold.

Followed a path down a deep ravine  
That led to the Little Red,  
The bright eyed filly trailing close,  
The wise old mare ahead.

The old mare stops her head aloft,  
Nostrils spreading wide,  
Scenting the breeze from the nearby hills, To  
sense what they might hide.

A cowboy comes riding over a hump  
With a loop that is hungry and long,  
pickin' his way 'mongst rocks and sticks,  
singin' a cowboy song.

He sees the filly with the big bright eyes,  
The mare with the cones in her tail  
And he figures he'll beat them down to the  
forks,

And goes slidin' down the shale.  
He stands up a loop in the filly's path,  
a runnin' like the breeze,  
The rope tied fast to his saddle horn,  
His horse goes to his knees.

He ties the filly hard and fast,  
Shoos the mare away,  
Gentles the filly best he can  
Working day by day.  
She follows him now without the loop,  
Bright eyes meek and mild,  
The old grey mare roams the hills,  
Lonesome for her child.

And this is the warning I'd give to you,  
Mares so grey and old.  
Hide away among the hills,  
If your fillies you would hold.  
For cowboys ride and always will  
With a long and hungry loop  
And for old grey mares among the hills  
They do not give a whoop.



### **Ray Bagley**

Ray Bagley was a cowboy's poet. He was born in a cabin near Sidney, Iowa in 1880 and died in Calgary in 1973. He was a horseman, cattleman and a poet.

In 1892 his family moved by wagon train to a homestead near Lacombe. In the 1920s Ray raised thoroughbreds and partnered with chuck wagon driver Tom Lauder, who used several of his thoroughbreds to pull Tom's wagon, winning in the Calgary Stampede and in Edmonton in 1924 - the first driver to win both cities in one year. They also won in Edmonton in 1925.

When the Great Depression hit in the 1930s Ray and his family moved to Onion Lake, Saskatchewan hoping for better conditions.

With the improving economy after the Second World War they moved back to Alberta, settling on the old Hogan homestead on Tecumseh Road in 1940. They named their new home "Crows Nest Ranch". The military was recruiting and paying a dollar a day so it was hard to find cowboys to trail a herd. Cattle were shipped by rail but over 100 head of horses were trailed out to Morley Flats and then back to CrowsNest in the spring. Ray had little formal education but in his cabin at Crows Nest Ranch he kept about 200 books on Canadian and American history near the small desk where he wrote his poems.

Although Ray began writing poetry in the 1930s this did not become known to the public until the 1950s when his nephew Claude Brewster, an outfitter for the Trail Riders of the Canadian Rockies, invited him to take part in the trail rides and read his poetry as part of the evening entertainment.

The Crows Nest Ranch was a favourite place for his many grandchildren to spend their summer holidays. One of their yearly jobs was to paint a sign for the main gate that people could always remember to open, but often forgot to close.

The sign said:  
"Hell hath no fury so they say,  
Like a woman scorned, but anyway,  
Close this gate, for I'm telling you,  
I get pretty damned fussy too.

Article and poem excerpted from an article by Dr. Daryl Drew published in *Canadian Cowboy Country* - June/July 2014 as well as Volume 1 of *Crowsnest and Its People*. Bagley's poetry is apparently housed in the Whyte Museum in Banff.



## Historical Venues in Southern Alberta

- **CROWSNEST MUSEUM** - 7701 18th Ave. Coleman. 403-563-5434



• As well as exhibits on coal mining in the Crow's Nest Pass, there are galleries on Pass life in the early 1900s, natural history, the military, and on Emperor Pic and rum-running. There is a gift shop near the entrance. For tours and educational programs: Contact: [cnmuseum@shaw.ca](mailto:cnmuseum@shaw.ca).

- Open : Monday to Sunday, 9 am - 5 pm. Adults \$10, Seniors (65+) \$8, Youth (6-16) \$6, Under 6 free, Families \$24.



- **BELLEVUE UNDERGROUND MINE** - 21814 28th Avenue Bellevue, AB T0K 0C0 (403) 564-4700

• The Bellevue Underground Mine is the only authentic historic underground coal mine tour available to western Canada. The mine is a museum based, family oriented, historic underground coal mining museum tour site that offers its visitors the opportunity to experience, first hand, what the

underground miners from the first half of the 20th century would have experienced as they entered the tunnels of the Bellevue Underground Mine to go to work to each day.

- Open: Monday—Sunday 9:30 am—6:30 pm. Last tour 5:30 pm. Adults \$14, Seniors \$13, Youth \$10, Children 5 and under free, Families \$38. Discount pre-booked tours are available.



- **THE FRANK SLIDE INTERPRETIVE CENTRE** - off Hwy 3 Crow's Nest Pass 403-562-7388

The Frank Slide Interpretive Centre highlights the rich heritage of the Crow's Nest Pass amid the breathtaking beauty of the Canadian Rockies. The Centre is open all year and visitors are greeted by friendly, knowledgeable staff who share the fascinating stories of the Frank Slide through dynamic interpretive programs and presentations. State-of-the-art interactive displays and exhibits throughout the Centre focus on the infamous Frank Slide of 1903 - Canada's deadliest rockslide. The Frank Slide Interpretive Centre is

open year round 10:00 am to 5:00 pm (10 am to 6 pm in the summer) . Adults \$11, Seniors (65+) \$9, Youth (7-17) \$5, 6 and under free, Families \$28.



- **KOOTENAI BROWN MUSEUM** - 1037 Bev McLachlin Dr., Pincher Creek. 403-627-3684

• This year we will be opening a special exhibit to commemorate the 100th anniversary of WWI and the 75th anniversary of WWII. Members of the Pincher Creek Legion, local war veterans and RCMP will participate in our plaque dedication for the exhibit and be available to give tours. There will also be a flag raising ceremony, bouncy tents, obstacle courses, face painting and balloons for kids; a concession with hotdogs, burgers, candy floss and snow cones; and historical tours.

- Established in 1966, the Museum consists of 19 buildings housing over 18,000 artifacts from southern Alberta. The legendary George "Kootenai" Brown lived in southern Alberta and his cabin and some of his possessions form part of the Museum's exhibits. Kootenai Brown Museum is open to the public daily from 10 am to 6 pm. Adults \$10, Seniors (65+) \$7, Youth (7-17) \$7, Under 7 free, Families \$25



**•HEAD-SMASHED-IN (UNESCO WORLD HERITAGE SITE)** - Hwy 785 403-553-2731

Hikes to the Dirve Lanes 10:30—

3 pm.

- Experience authentic First Nations culture in the open air of our plaza.

Our best native dancers perform to the beat of Blackfoot drumming and singing. Hear stories of how drumming and dancing connect us with the ancient buffalo hunting culture

- Along with its displays, the interpretive centre has audio-visual presentations, a cafeteria featuring bison burgers, a gift shop filled with First Nations handicrafts, and hosts tour groups and runs educational programs. Open daily 10 am to 5 pm. Contact: info@head-smashed-in.com. Admission: Adults \$11, Seniors (65+) \$9, Youth (7-17) \$5, 6 and under free, Families \$28. The Centre can be booked for special events.



**•GALT MUSEUM AND ARCHIVES** - 502 1st St. S., Lethbridge 1-866-320-3898

- The Museum is open all year round. Monday to Saturday 10 am to 5 pm, Thursday 10 am to 9 pm, Sundays and Holidays 1 pm to 5 pm. Adults \$6, Seniors (60+) \$5, Post-secondary students and Youth (7-17) \$3, Under 7 free, Families \$15.



**•FORT WHOOP-UP NATIONAL HISTORIC SITE** - Lethbridge, off Whoop-Up Drive. 403-329-0444

- Fort Whoop-Up existed before there was an Alberta or Mounties; it was a notorious frontier trading post. It lies nestled in the coulees of Indian Battle Park, near the Oldman River. Today, the fort still trades with the aboriginal Blackfoot tribes of Southern Alberta, supplying many ceremonial goods, hides, sweetgrass, and other items.

- The Fort is open daily from 10 am - 5 pm; Adults \$9, Seniors (65+) \$7.50, Students \$6.50, Under 5 free, Families \$24.50.



**•REMINGTON CARRIAGE MUSEUM** - 623 Main St. Cardston. 403-653-5139

- The Museum has the largest collection of horse-drawn vehicles in North America with over 240 carriages, wagons and sleighs. The 63,000 square foot facility features video displays, a fire hall, a carriage factory, a restoration shop, a working stable, carriage rides, carriage rentals, a restaurant and a gift shop. There are free guided tours. Group tours and educational tours are offered. Open daily 9 am - 5 pm. Contact: info@remingtoncarriagemuseum.com. Admission: Adults \$11, Seniors (65+) \$9, Youth

(7-17) \$5, 6 and under free, Families \$28.



**•WRITING-ON-STONE** - Hwy 4 South from Lethbridge. Then Hwy 500 West. Then South on Range Road 130A

- Open year round for camping. No reservations are necessary if you wish to use a camp site at the park in the winter. Fees range from \$13 to \$19 a day. Guided rock art tours are only offered from May to October.

- Writing-on-Stone / Áísínai'pi is a sacred landscape. The spectacular Milk River valley contains the largest concentration of First Nation petroglyphs (rock carvings) and pictographs (rock paintings) on the great plains of North America.





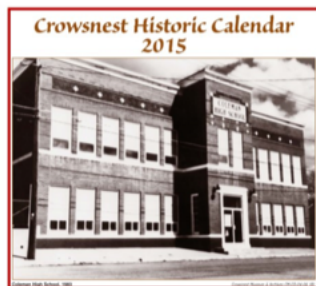
Looking for some great gifts or stocking stuffers for this holiday season? The Museum has what you are looking for!

We have a limited supply of Hillcrest 100 memorabilia. In case you could not pick up any Hillcrest Mine Disaster Centennial keepsakes there are a few left at the Museum.

These include:

Hillcrest Mine Disaster 2014 Crowsnest Trade Dollars (Gold Plated, Silver, and Nickel versions)

Tag 189 Prints (Framed or Matted)



*Snowing in June*  
by Belle Kovach  
and Mary Bole



If you haven't picked up your 2015 Historic Crowsnest Calendar they will be available in December.

There is much more in the Gift Shop. Stop in and find that unique gift for everyone. Museum hours are 9-5, Monday-Saturday.

## **ARCHIVES**

Copies of this newsletter and archived issues can be viewed at

<http://www.crowsnestheritage.ca/?p=351>

## **SUBSCRIBE/UNSUBSCRIBE**

If you wish to receive copies of this quarterly e-newsletter or wish to comment upon something you have read in this publication, please contact [cnhnewsletter@shaw.ca](mailto:cnhnewsletter@shaw.ca). If you wish to stop receiving copies of this e-newsletter, please send a message to [cnhnewsletter@shaw.ca](mailto:cnhnewsletter@shaw.ca) asking to unsubscribe.